

STAINLESS PRODUCTS



TRUSTED SOLUTIONS

FLOOR DRAINS
TRENCH DRAINS
CLEANOUTS
P-TRAPS
HUB DRAINS
FLOOR SINKS
FLOOR TROUGHS
CUSTOM SOLUTIONS

920.261.4112
KuselEquipment.com
Sales@KuselEquipment.com

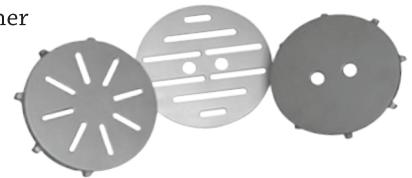


CHOOSE KUSEL QUALITY

Since the 1980s, Kusel has been producing stainless steel drainage products that are built to last in the real world. That's why engineers, contractors, and plumbers know that when they choose a Kusel drain, they're getting a product they can count on. Our continuous and multi-side welds make our drains and accessories more sanitary and stronger, so you can rest easy knowing your Kusel drain product was built to last. In fact, we're so confident in our manufacturing process that our KE Series Floor Drains come with a lifetime warranty to be free from defects in material and workmanship. From large-scale developments to smaller projects and niche applications, standard drains to custom pieces, our team has the experience and expertise you need for every job.

STAINLESS MEANS SANITARY

When sanitation is your number one priority, make stainless steel your first choice. Whether 304 or 316L, stainless is a material that has been proven effective time and again. Kusel takes sanitation to the next level by using a passivation process on our KE series drains. [That ensures you're getting the most sanitary drain available.](#)



KUSEL WORKS WHERE YOU WORK



Kusel has experience providing drainage solutions to a variety of industries, from industrial food processing and brewing, to pharmaceutical manufacturing and commercial kitchens. With six product families NSF listed in accordance with ASME standards, you can be assured a Kusel drain will hold up in your environment.

ACCESSORIES

Whatever accessory you need, Kusel has. With hundreds of thousands of product variations, chances are good we've done it before. Design your specific application and product, and Kusel will work with you to find the solution that will fit what you need!



CUSTOM OPTIONS

Sometimes a standard piece isn't quite right for the job. No problem. Kusel's drainage experts will work with you to design the perfect piece. With hundreds of thousands of variations on our standard products, our team can create a custom-fit solution for your project.



KEM SERIES DRAINS *

For areas with pedestrian traffic, when sanitation, durability, and accessibility matter most.

- 8" top drain
- 2"- 6" outlets
- 316L stainless steel
- 2" drain body depth
- Standard industrial finish
- Bead-blasted welds



*For more information on NSF listing in accordance with ASME standard A112.6.3 visit kuselequipment.com/drains

CLEANOUTS **

Create easy access to drain lines when cleaning is required.



- 2"- 12" outlets
- 304 or 316L stainless steel
- Features "O"-ring seal with screw down cover
- Standard industrial finish
- Bead-blasted welds

**For more information on the 304 stainless steel option NSF listing in accordance with ASME standard A112.363.2 visit kuselequipment.com/drains

HUB DRAINS

For pipes and hoses that require an atmosphere break.

- 2"- 12" outlets
- 304 or 316L stainless steel
- Per application inlets
- Schedule 10 or Schedule 40 available
- Standard industrial finish
- Bead-blasted welds



P-TRAPS

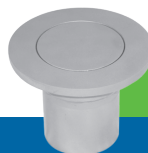
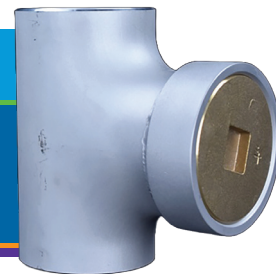
When consistency of material, sanitation and corrosion resistance are priorities.

- 1.5"- 12" diameters
- 304 or 316L stainless steel
- Schedule 10 or Schedule 40 available
- Full welds

WALL CLEANOUT TEES

Create easy access to exposed pipes.

- Available in 2" through 6" sizes
- 304 or 316L stainless steel
- Schedule 10 or Schedule 40 available
- Countersunk tapered plug
- PVC, brass, or stainless steel plug



Not seeing what you need?
Contact your rep or call 920-261-4112 for more options.

CLASSIC TRENCH DRAINS*

For areas where linear drainage is required.

NSF

- 3", 4" & 6" end or center outlets
- 304 stainless steel
- 4 ft.- 24 ft. lengths available in 4 ft. increments
- "V" shaped trench bottom in 6.75", 9.5", or 12" widths
- 12 gauge body
- Setting tabs every 24 inches
- Standard industrial finish
- Bead-blasted welds
- Strainers
- Solid plate or open grate available



SOLID PLATE

OPEN GRATE

*For more information on NSF listing in accordance with ASME standard A112.6.3 visit kusequipment.com/drains

CLASSIC FLOOR SINKS

For large areas where significant flow occurs.

- 4" Schedule 40 or 6" Schedule 10 outlets
- 14 gauge 304 stainless steel
- 12"- 36" lengths available
- 12"- 24" widths available
- 6"- 22" depths available
- Setting tabs included
- Standard industrial finish
- Bead-blasted welds
- Full basket & strainer options
- Formed channel or open grate available

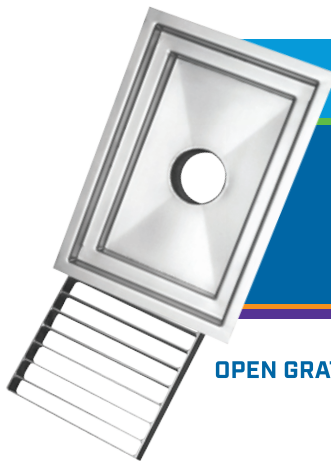


FORMED CHANNEL

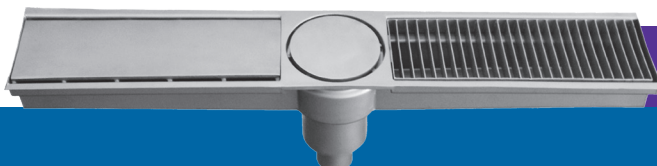
CLASSIC FLOOR TROUGHS

For large areas where significant flow occurs without a basket.

- 4"- 6" outlets
- 14 gauge 304 stainless steel
- 12"- 48" lengths available
- 12"- 24" widths available
- 4" & 10" depths available
- Standard industrial finish
- Bead-blasted welds
- Strainer options
- Formed channel or open grate available



OPEN GRATE



Not seeing what you need?
Contact your rep or call 920-261-4112 for more options.

KE SERIES FLOOR DRAINS*

Our KE drains provide an easy way to eliminate wastewater drainage problems. This series offers a highly customizable solution for any environment in which sanitation, durability, and accessibility are critical. With hundreds of thousands of configurations available, our KE drains offer almost unlimited possibilities.

*For more information on NSF listing in accordance with ASME standard A112.6.3 visit kusequipment.com/drains



STANDARD

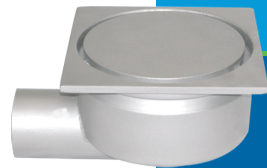
For most common applications with areas of heavy traffic where a sanitary, durable solution is needed to deal with debris content.

- 12" top drain
- 2"- 10" outlets available
- 304 or 316L stainless steel
- 6" drain body depth
- USDA accepted
- Square or round top available

LOW PROFILE

For areas that require a low profile where depth may be an issue.

- 12" top drain
- 2"- 10" outlets available
- 304 or 316L stainless steel
- 4" drain body depth
- Square or round top available



SIDE OUTLET

For areas where a configuration of a side outlet is required.

- 12" top drain
- 2"- 4" outlets available
- 304 or 316L stainless steel
- 6" drain body depth
- Square or round top available

CONE BOTTOM

For areas that require enhanced efficiency.

- 12" top drain
- 2"- 10" outlets available
- 304 or 316L stainless steel
- Square or round top available



DEEP BODY

For areas where floor thickness is increased or where a deep or large volume sump is required.

- 12" top drain
- 2"- 10" outlets available
- 304 or 316L stainless steel
- 8", 10", 12" drain body depth
- Square or round top available



SERVICE & DELIVERY WHEN YOU NEED IT

We have some of the best lead times in the industry because stainless steel is all we do. You can rest assured your order will be on site at the time we've committed to you. And with hundreds of drains in stock and Kusel's ability to expedite production, your deadlines can even be beaten. Simply discuss your needs when you request a quote with our manufacturers' representatives, and our team of drainage experts can work with our rep to find the product that will not only be right for your project, but make it to the job site when you need it to be there.



820 WEST STREET
WATERTOWN, WI 53094
920.261.4112
KuselEquipment.com
Sales@KuselEquipment.com

